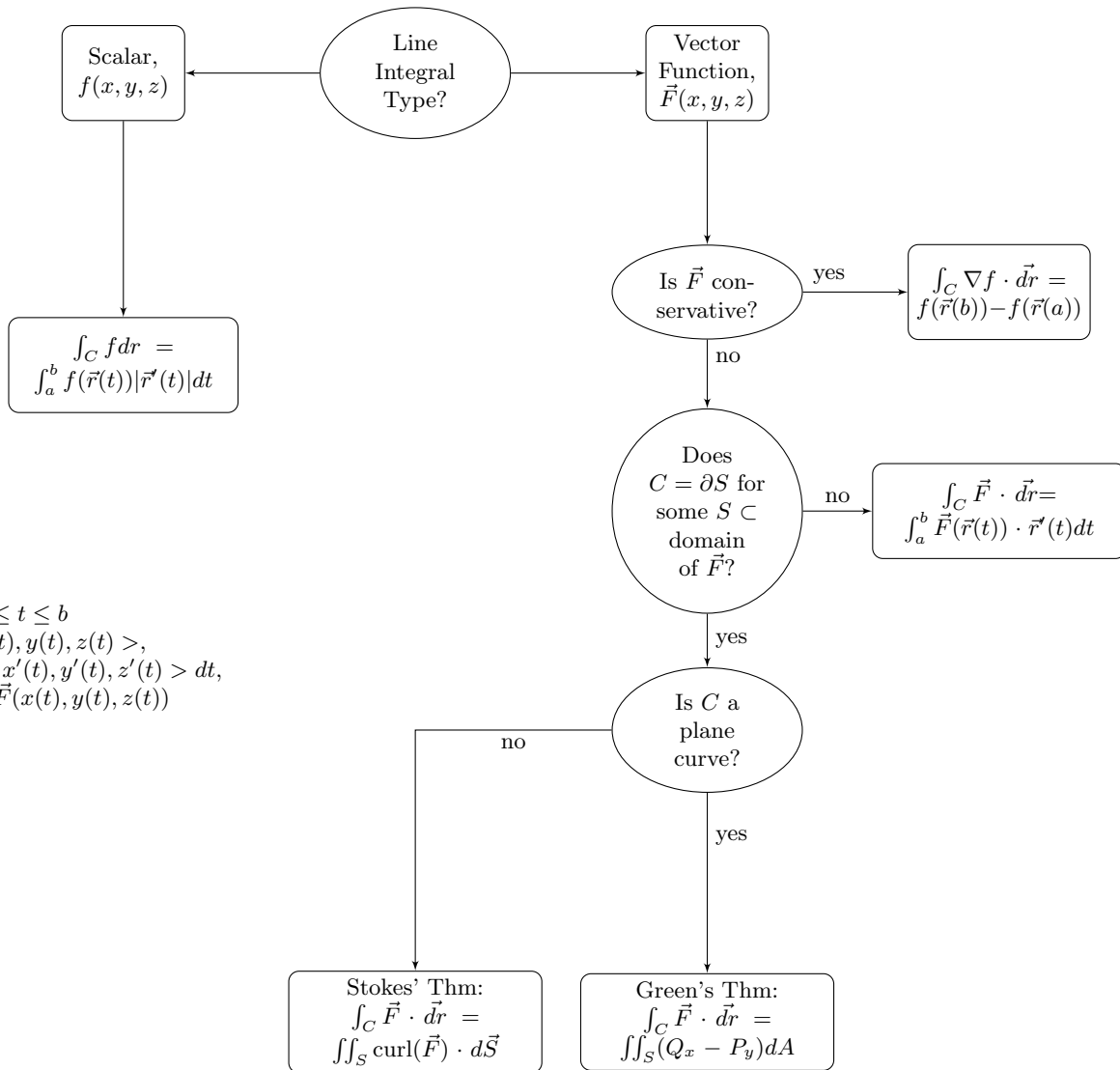


Line Integrals



$C : \vec{r}(t), a \leq t \leq b$
 $\vec{r}(t) = \langle x(t), y(t), z(t) \rangle,$
 $\vec{r}'(t) dt = \langle x'(t), y'(t), z'(t) \rangle dt,$
 $\vec{F}(\vec{r}(t)) = \vec{F}(x(t), y(t), z(t))$