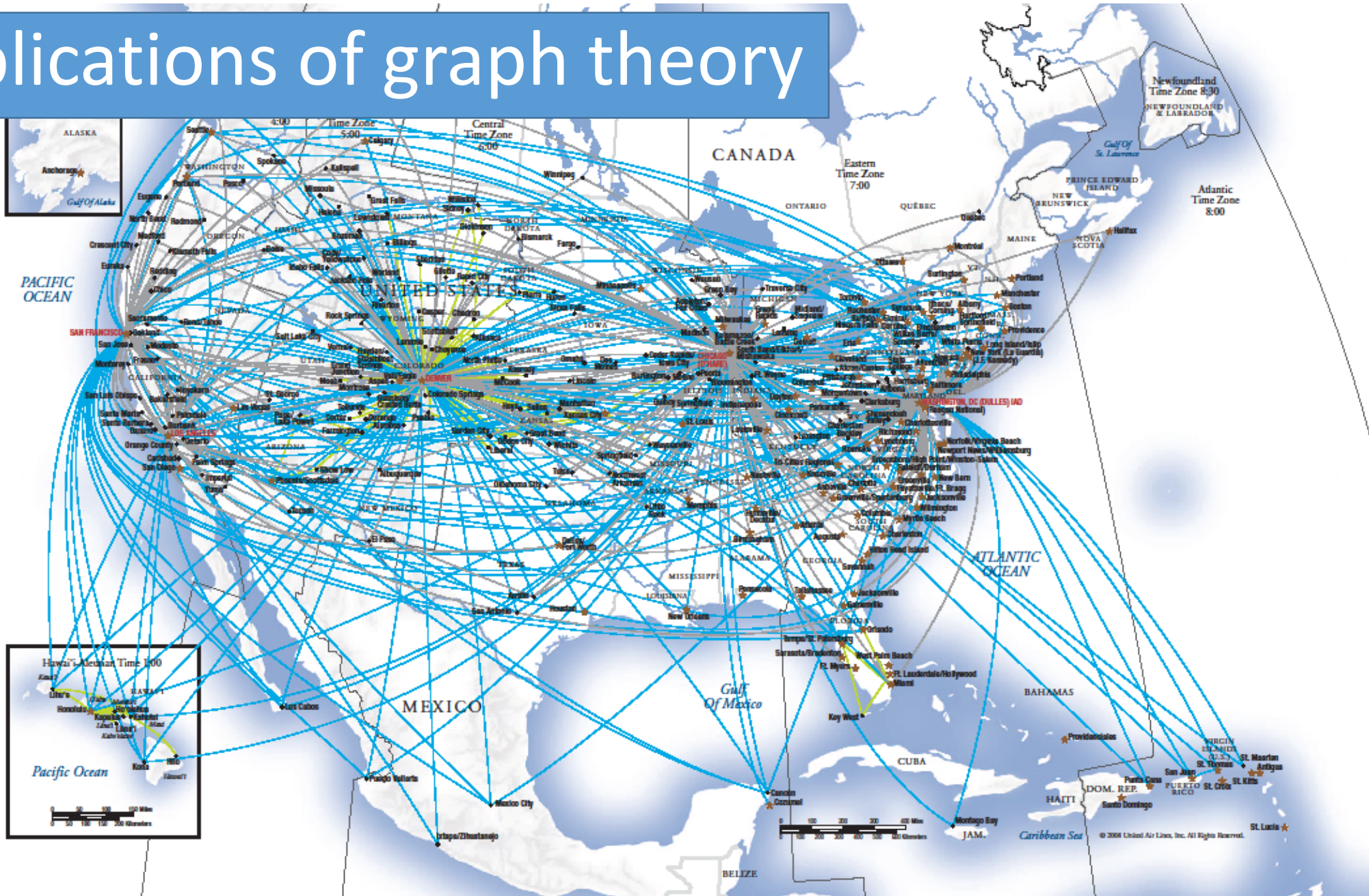
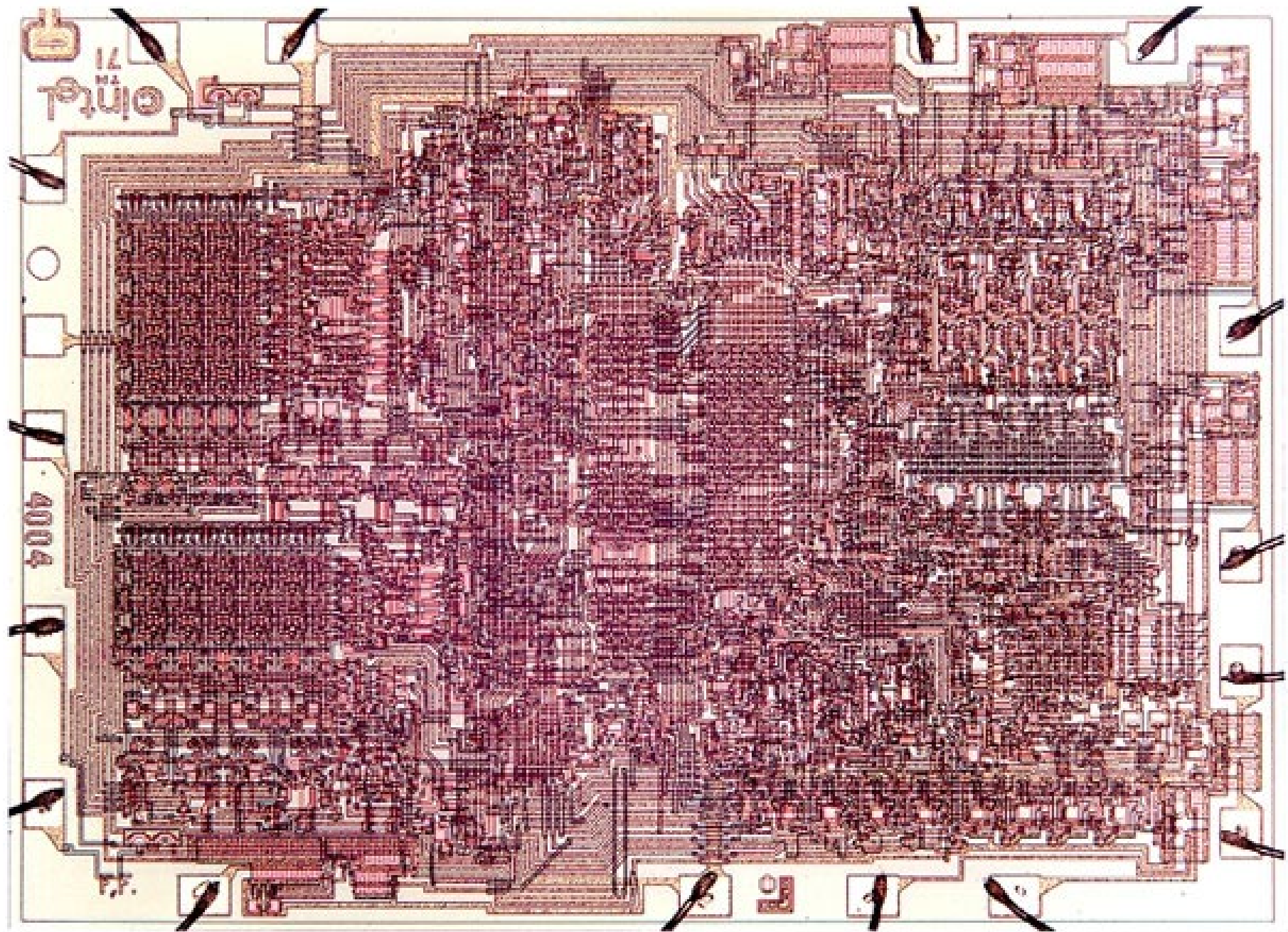


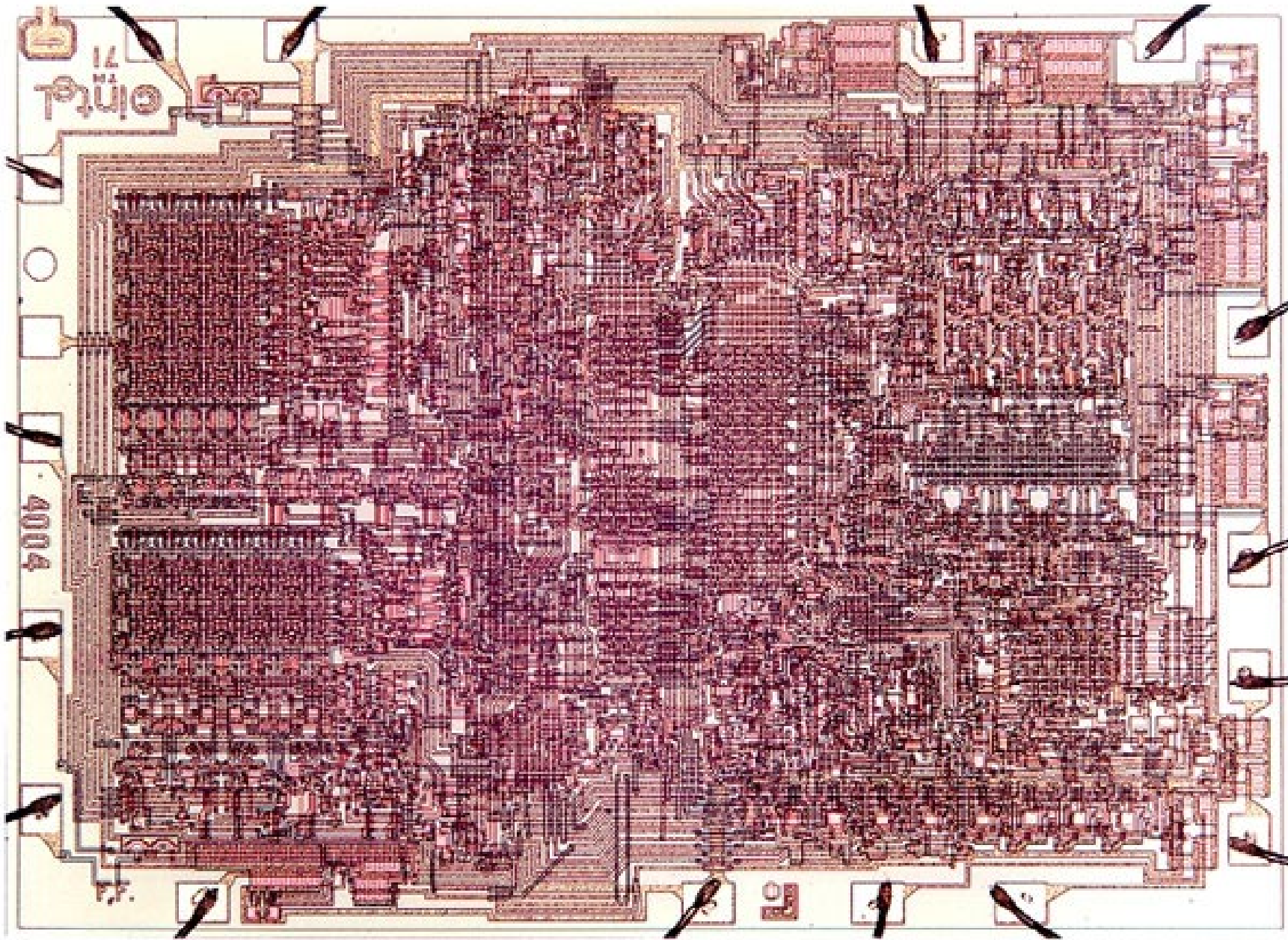
Applications of graph theory



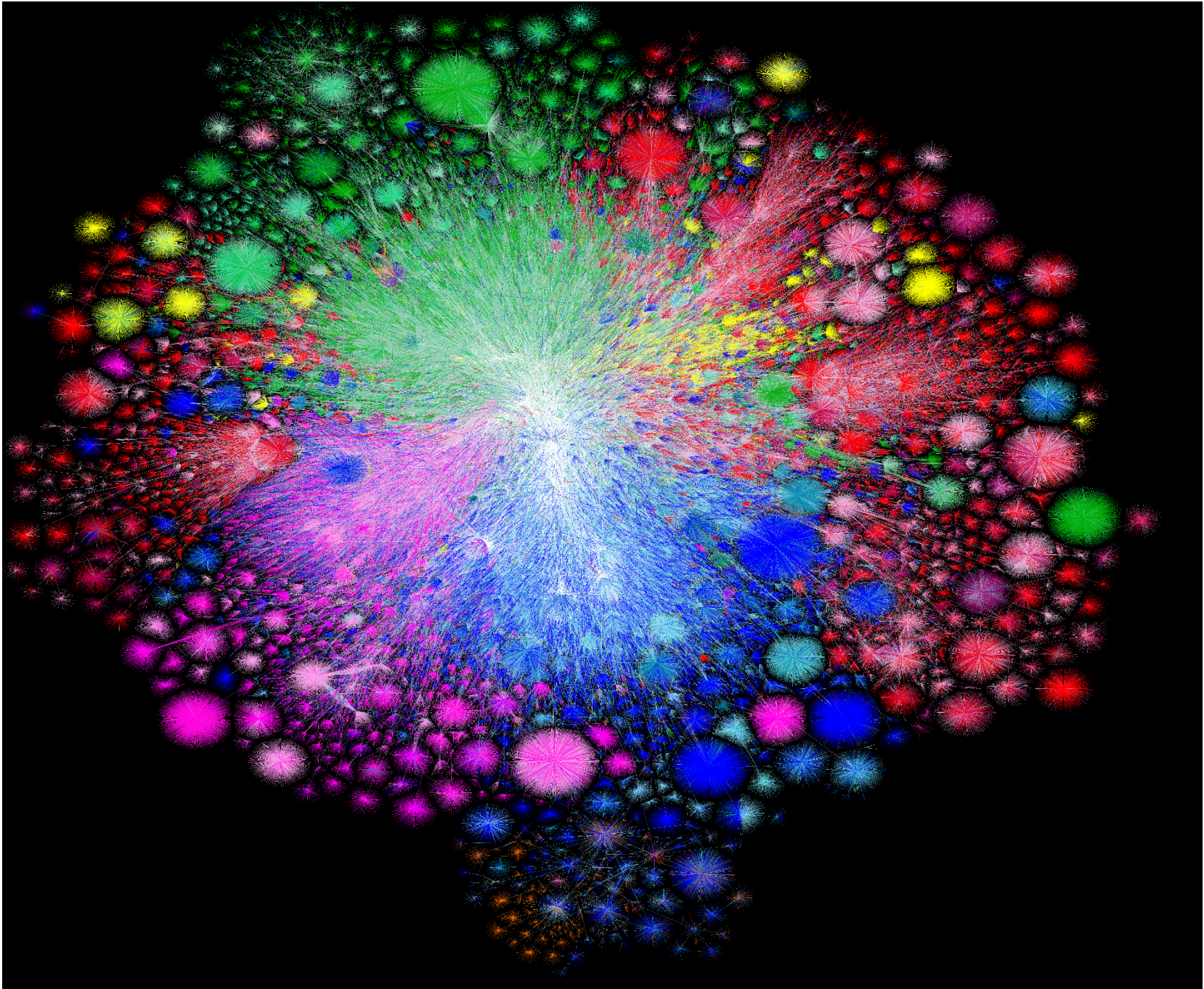


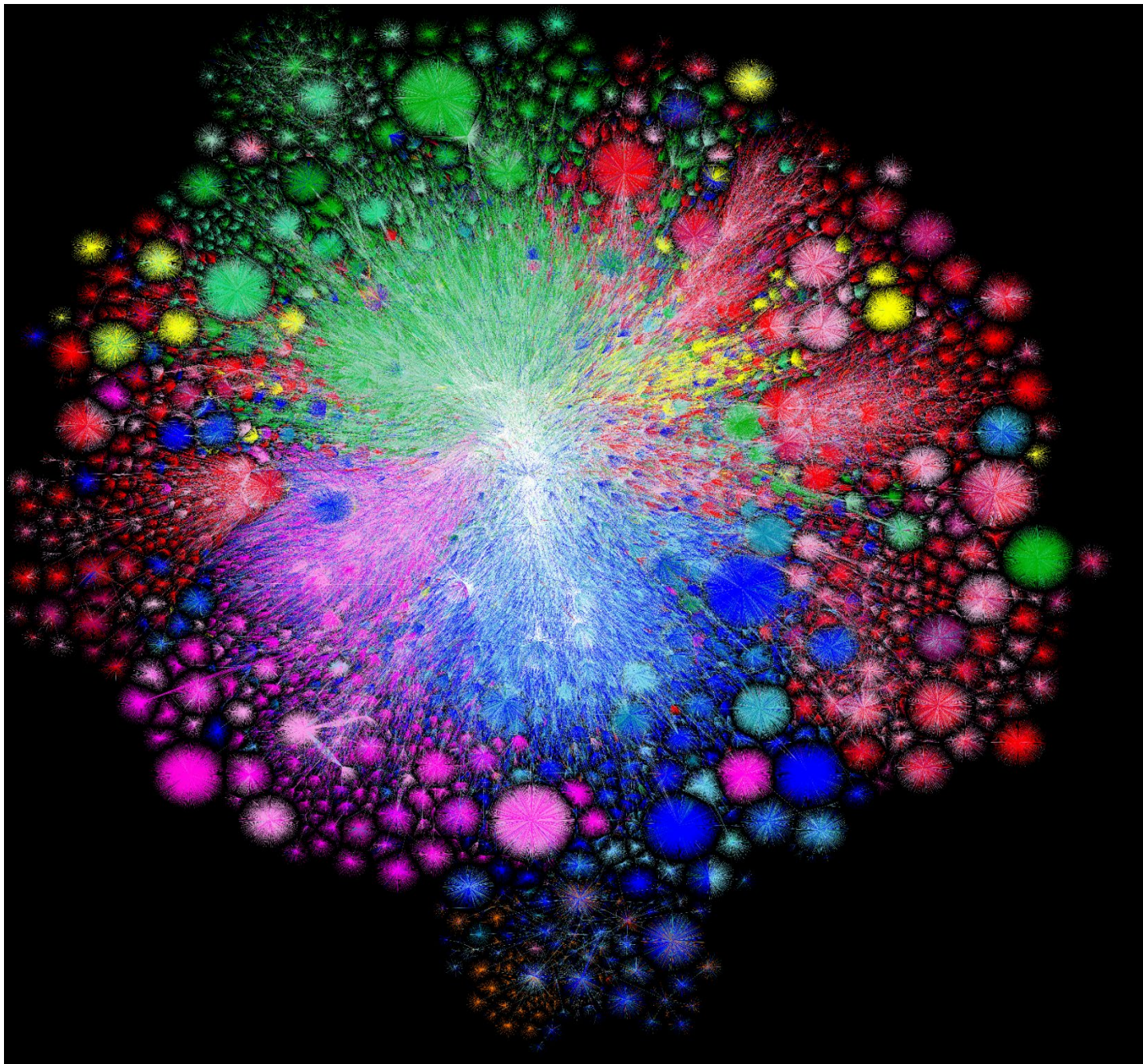
- What's the quickest/cheapest way from one city to another? (*shortest path*)
- What flights should the airline offer? Where should they put their next airport? (*network efficiency, Steiner problem*)





- How do we arrange the circuit to have the fewest crossed wires? (*crossing minimization*)





- How does Google quickly sort web pages to put the ones we're looking for first? (*PageRank*)
- How much traffic is going between different regions of the network? (*bandwidth*)
- How do we display a network aesthetically to reveal the most information? (graph drawing)